

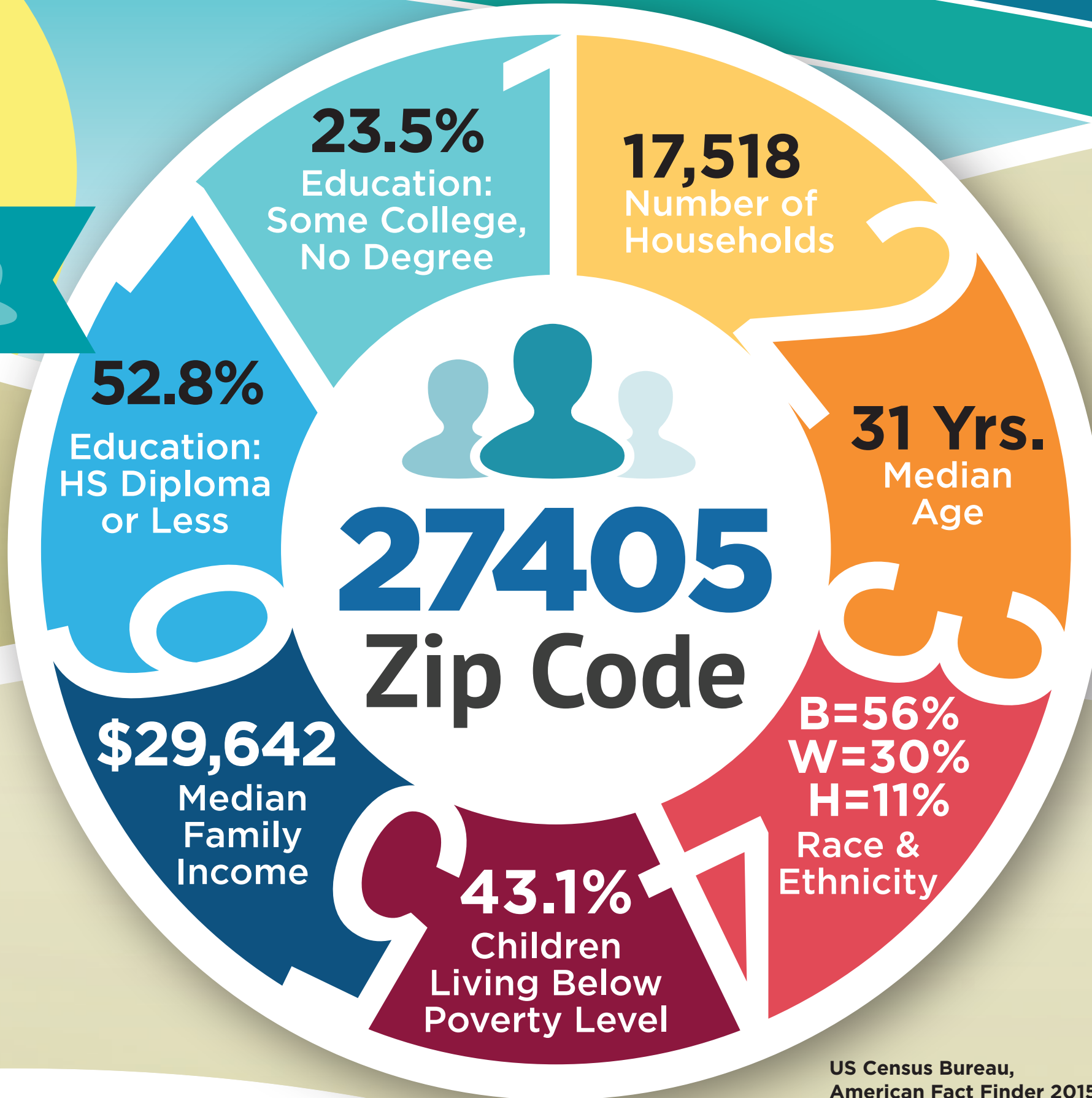


Creating Access to Care in East Greensboro, NC

A HEALTHCARE DESERT

The People

The Problem:
East Greensboro Has Very Limited or No Access to Primary Care



US Census Bureau, American Fact Finder 2015 Survey Data <https://factfinder.census.gov>

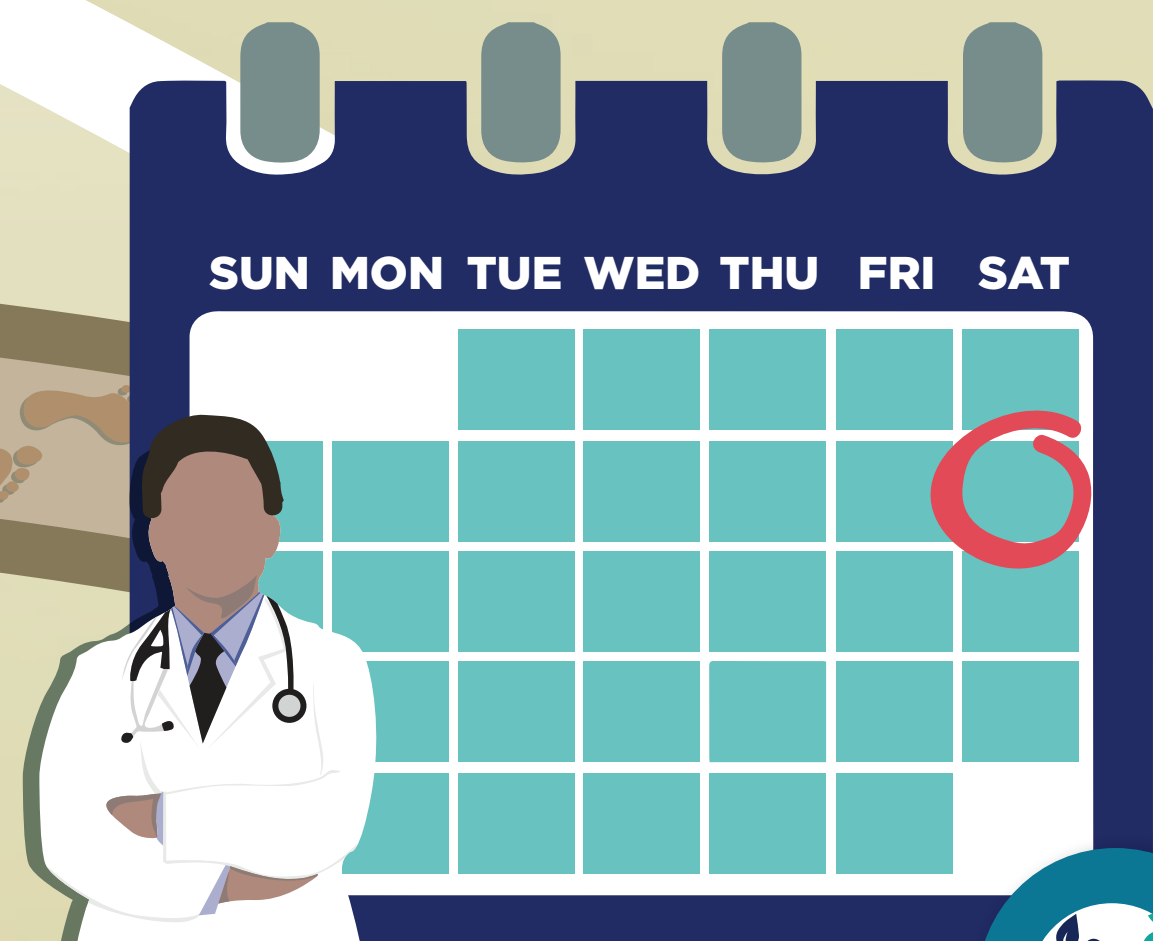
Looking for Solutions



Community Stakeholder Meeting

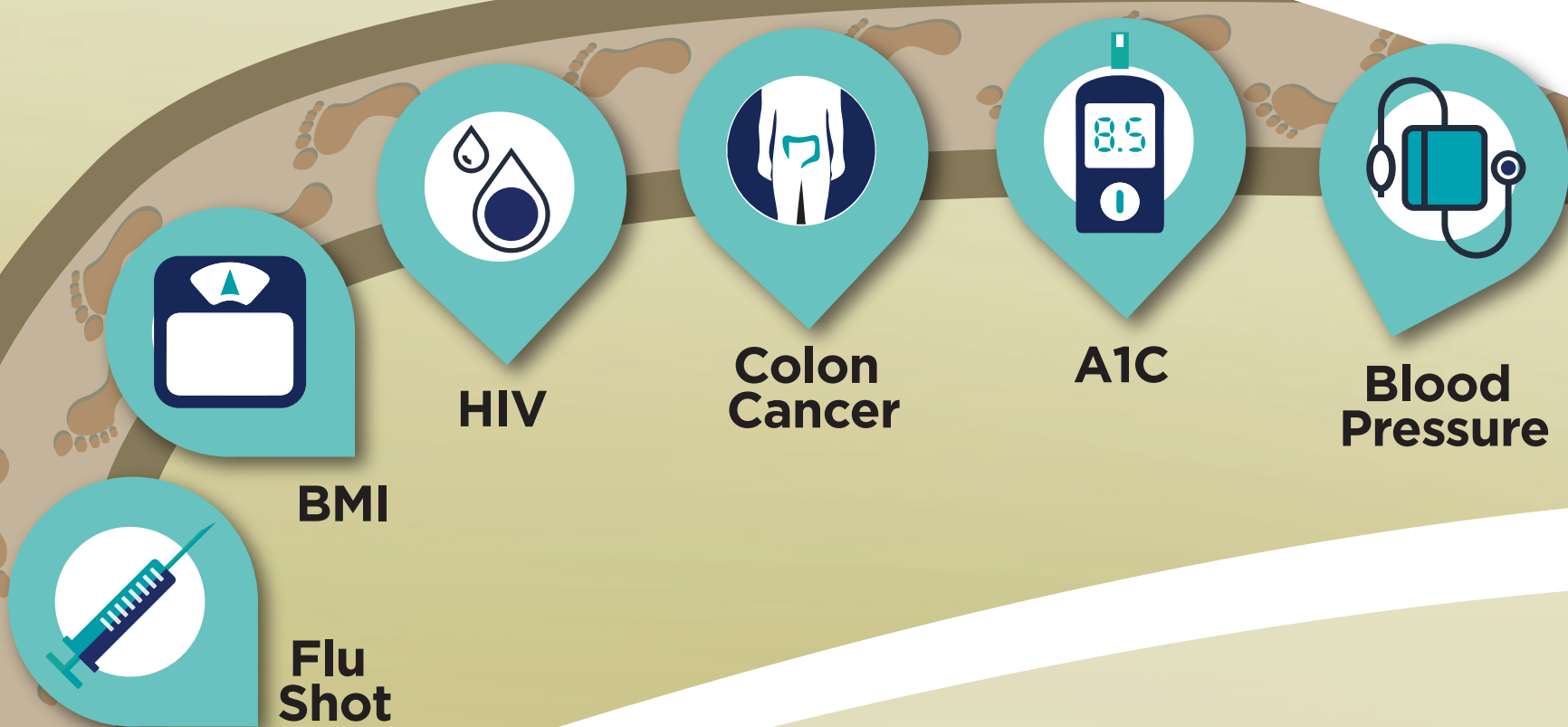


Survey Community Residents

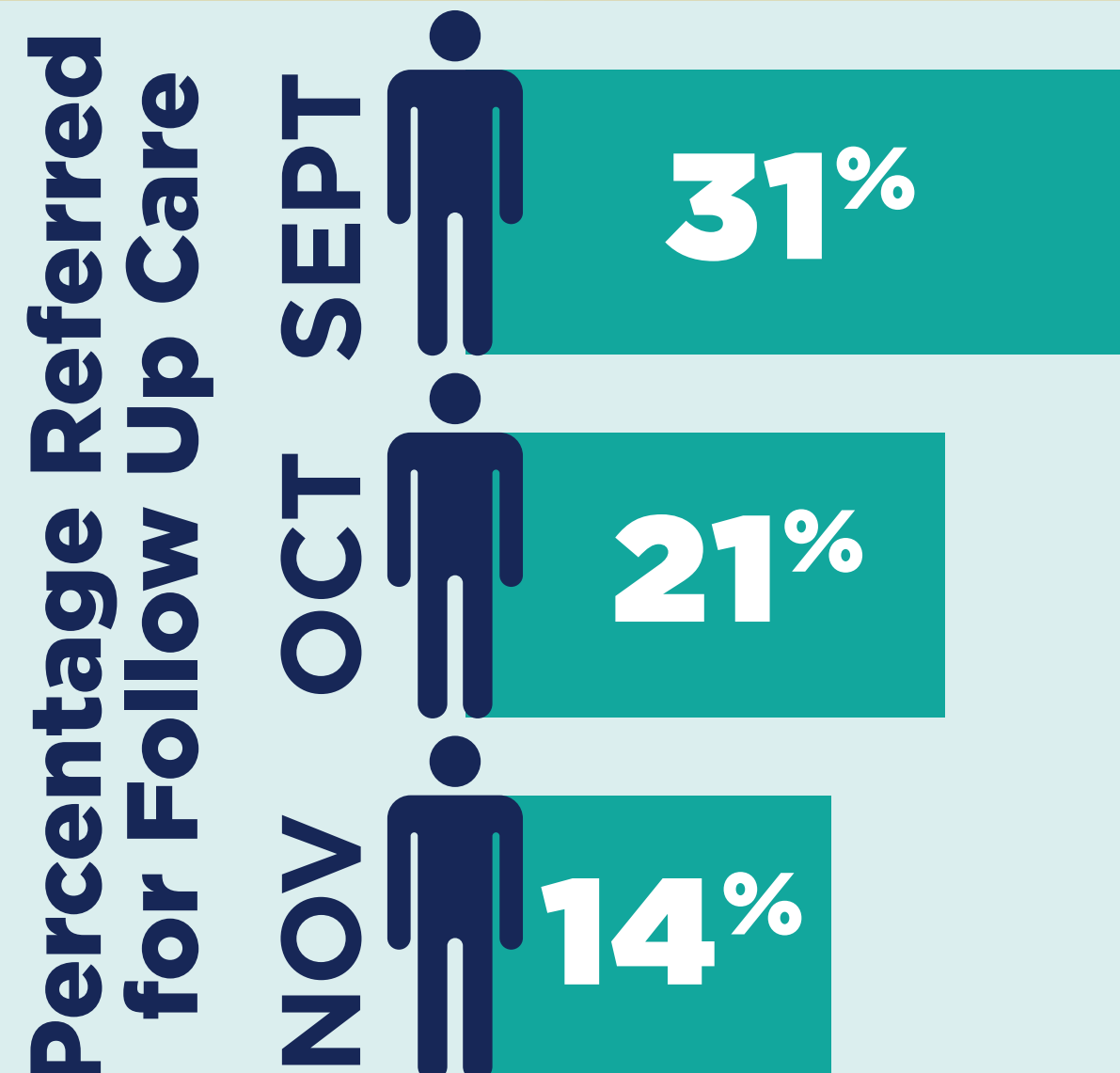


Developed Monthly Speaker Series With Health Screenings

Screenings & Topics Included:



Results



KEY LEARNINGS

- 1 Develop More Trust
- 2 Include Community Trust Partner
- 3 Collaborate With Existing Resources and Services in the Community
- 4 Evaluate Seasonal Factors Such as Weather
- 5 Adjust Time of Day/Day of the Week

NEXT STEPS

- Support local events by providing health screenings in zip code 27405
- Primary Care office opening in 2018 in zip code 27405